



**OFFICE OF THE DIRECTOR OF EDUCATION
BUSINESS AND FACILITIES STANDING COMMITTEE
PUBLIC SESSION**

MEETING AGENDA – Wednesday, March 2, 2016

**PUBLIC SESSION will commence immediately following the Board Meeting – GEORGIAN ROOM
followed by CLOSED SESSION**

PUBLIC SESSION will resume following CLOSED SESSION

1. Approval of Agenda
2. Declaration of Conflicts of Interest

Closed Session

Presentations/Delegations - Nil

Items For Decision

- | | | |
|---|-----------------|--------------------------|
| 1. Naming of the New North Simcoe Secondary School | (BF-D-1) | Superintendent Finlayson |
| 2. Attendance Area Review 2015:01 – Angus Morrison Elementary School and Pine River Elementary School | (BF-D-2) | Superintendent Dance |

Items For Information

- | | | |
|--|-----------------|----------------------|
| 1. Attendance Area Change – Baxter Central Public School/ Portage View Public School | (BF-I-1) | Superintendent Dance |
| 2. Budget Update | (BF-I-2) | Superintendent Jeffs |
| 3. Transition Plan for Orillia Secondary School (OSS) | (BF-I-3) | Superintendent Sloan |

Correspondence - Nil

Other Matters

Notices of Motion for Next Meeting

Adjournment

DISTRIBUTION

Trustees
Superintendents

NOTICE: Public Standing Committee meetings are video-recorded and made available for public viewing.

TO: The Chairperson and Members of the
Business and Facilities Standing Committee

FROM: Superintendent of Education

SUBJECT: **NAMING OF THE NEW NORTH SIMCOE SECONDARY SCHOOL**

1. **Background**

As a result of the Accommodation Review Committee, ARC 2013:01, Midland Secondary School and Penetanguishene Secondary School will close in June 2016. Students from these schools will amalgamate at the current Midland Secondary School site in September 2016. The site will be considered a holding school until a new school can be built on the existing property with an anticipated opening date of September 2018. The principal of the new school established an ad hoc committee as per Policy 4440 to recommend to the Simcoe County District School Board (SCDSB) a school name for consideration and Board decision.

2. **Committee**

The ad hoc naming committee members were as follows:

Peter Beacock (Trustee Oro-Medonte and Springwater, Chair SCDSB)
Michele Locke (Trustee Midland, Tay and Severn)
Stuart Finlayson (Superintendent of Education)
John Playford (Principal, Midland S.S. and New North Simcoe S.S.)
Brian MacIsaac (Principal, Penetanguishene S.S.)
Aimi MacMillan (Student, Penetanguishene S.S.)
Matt Thorhauge (Student, Midland S.S.)
Victoria Whiteside (Council Chair, Midland S.S.)
Janine Wood (Council Chair, Penetanguishene S.S.)
Doug Laroux (Councillor, Penetanguishene)
Scott MacPherson (Councillor, Oro-Medonte)
Cody Oschefski (Councillor, Midland)
Rose MacArthur (Community Member)
Steve Rastin (Community Member)

3. **Naming Process**

Suggested names for the new school to be established at the current Midland Secondary School site were invited through School Council, Board and school websites, local and social media, Municipal Offices, student amalgamation events, and each of the schools that are being amalgamated. Input was received from students, parents, community members and staff. A total of 38 distinct naming submissions were received.

The committee held meetings on November 24, 2015, December 1, 2015, January 14, 2016 and February 16, 2016. The committee reviewed all proposed names, paying particular attention to the names Georgian Shores, Huronia District, North Simcoe, Southern Georgian Bay and Wendake along with various nuances of each. After extensive discussion and consultation, including the voices of our student representatives, the committee reached a majority voted decision to recommend that the new school to be established in September 2016 be named Georgian Bay District Secondary School.

4. Rationale

The attendance boundaries of this school cover a large geographical region of the SCDSB and the committee felt that the name Georgian Bay District best represents that geographical region. The committee also recognizes the diversity that exists within this region and the need to respect and listen to all voices within the region. The name Georgian Bay District is inclusive of all students and families and it is aligned with the beauty that Georgian Bay offers those families we serve.

RECOMMENDATION

That the Business and Facilities Standing Committee recommend that the Board approve Georgian Bay District Secondary School as the name for the new school to be established at the current Midland Secondary School site effective September 1, 2016, as set out in Report No. BF-D-1, Naming of the New North Simcoe Secondary School, dated March 2, 2016.

Respectfully submitted by:

Stuart Finlayson
Superintendent of Education

March 2, 2016

TO: The Chairperson and Members of the
 Business and Facilities Standing Committee

FROM: Superintendent of Facility Services

SUBJECT: **ATTENDANCE AREA REVIEW 2015:01 - ANGUS MORRISON ELEMENTARY
 SCHOOL AND PINE RIVER ELEMENTARY SCHOOL**

1. Background

The Board approved undertaking an Attendance Area Review (AAR) in the southwest elementary planning area for the elementary schools in Essa Township in the 2014 Capital Plan. The schools included in the review are Angus Morrison Elementary School and Pine River Elementary School.

In accordance with Board Policy 2317 – School Attendance Areas, the review was undertaken to address accommodation pressures related to development occurring on the east side of the community of Angus. APPENDICES A and B depict the current attendance areas for each school.

Development activity in the eastern area of the community is ongoing. The Essa Township Growth Strategy identifies Angus as the primary settlement area in the township and directs growth to this fully serviced community. The 2013 Growth Strategy indicates 203 units available for development and an additional 857 units with draft approval. It is anticipated approximately 150 homes will be constructed in 2016. All growth is within the Angus Morrison Elementary School attendance area.

The objective of the attendance area review is to provide greater stability to students and families in the community while reducing accommodation pressures at Angus Morrison Elementary School. Current enrolment at Angus Morrison Elementary School is 617 with seven (7) portables. The enrolment at Pine River Elementary School is 242 with two (2) portables. Transferring students from the growing area of the eastern side of the community to Pine River Elementary School would relieve pressure at Angus Morrison Elementary School and create a stable and sustainable enrolment at Pine River Elementary School. The following chart depicts current and future enrolment and utilizations at the schools involved in the review.

Status Quo Enrolment & Projections

	OTG	History		Actual	Projected		
		2010	2014	2015	2016	2020	2025
Angus Morrison	458	455	616	617	615	663	648
Utilization		99%	134%	135%	134%	145%	141%
Total over capacity		-3	158	159	157	205	190
Pine River	234	297	259	242	236	234	231
Utilization		127%	111%	103%	101%	100%	99%
Total over capacity		63	25	8	2	0	-3

2. Current Status

The AAR commenced with an information letter to students at each school. Families living within the area proposed to be moved from Angus Morrison Elementary School to Pine River Elementary School were also provided with a proposed attendance area map as well as a questions and answers information sheet. Posters of the proposed attendance areas and the questions and answers sheet were placed at each school in response to queries posed to principals and through email submissions.

A public meeting was held at Pine River Elementary School on February 4, 2016. The meeting was well attended by affected families whose questions ranged from implications for childcare to when a new school could be built. A recurring opinion was that the CFB Borden area should be transferred to Pine River Elementary school instead of the area proposed. APPENDIX C includes the questions and answers posted in the schools and the new questions raised at the meeting.

The proposed attendance area change would transfer approximately 80 students from the Brownley Meadows subdivision to Pine River Elementary School as shown in APPENDIX D. This would relieve significant enrolment pressures at Angus Morrison Elementary School and result in the requirement of three (3) additional portables at Pine River Elementary School. There is sufficient yard space and washroom capacity to accommodate the additional portables at Pine River. As per Policy 2317, students who will be entering Grade 8 in September 2016 would have the choice to stay at their current school until they graduate. The following chart depicts projected enrolment and utilization of the proposed attendance areas.

Proposed Enrolment & Projections

	OTG	History		Actual	Projected		
		2010	2014	2015	2016	2020	2025
Angus Morrison	458	455	616	617	530	556	547
Utilization		99%	134%	135%	116%	121%	119%
Total over capacity		-3	158	159	72	98	89
Pine River	234	297	259	242	321	341	332
Utilization		127%	111%	103%	137%	146%	142%
Total over capacity		63	25	8	87	107	98

Staff considered walking zones, busing, capacities, enrolment, and the need for portables in its analysis. The French Immersion and Extended French as a Second Language programs were not included or impacted by this review, as the students enrolled in these programs would continue to attend Ardagh Bluffs Public School for these programs. Students in the affected area are currently bused to Angus Morrison Elementary School and would be bused to Pine River Elementary School under this scenario. No walk zones have been affected by this proposal.

Several scenarios were examined before the proposed attendance area change was brought forward to the public. For example, the area north of Centre Street and CFB Borden were separately considered for inclusion in the Pine River Elementary School attendance area; however, the disruption to walk zones and the number of students to be moved in the short and long term was unsustainable after the analysis was completed leading to the current proposal.

The proposed attendance area includes the yet to be developed Phase II of Brownley Meadows subdivision. Growth in this area will help maintain enrolment at Pine River Elementary School in the future. Through the annual capital planning process, staff will continue to monitor development and enrolment in this area and staff may recommend a future business case to be prepared in order to accommodate new pupil places in Angus if justified.

APPENDIX E illustrates the proposed attendance areas for both Angus Morrison Elementary School and Pine River Elementary School.

3. Comments and Concerns

Following the public meeting held on February 4, 2016 at Pine River Elementary School, one comment sheet was received requesting the evening pick up time from the Before and After program at Pine River Elementary School be extended to 6:30 p.m. to accommodate the childcare needs of one of the families potentially affected. This request will be reviewed with the childcare operator.

4. Conclusion

The proposed attendance area change will alleviate the enrolment pressures at Angus Morrison Elementary School and create a sustainable enrolment at Pine River Elementary School. Current walkers will not be affected by the proposed change. Students in the French Immersion and Extended French as a Second Language programs are not affected by the proposed changes. This proposal will accommodate future growth in the community of Angus. Should the area experience sufficient future growth, a business case may be made to the Ministry of Education for additional pupil places in the form of an addition or new school.

RECOMMENDATIONS

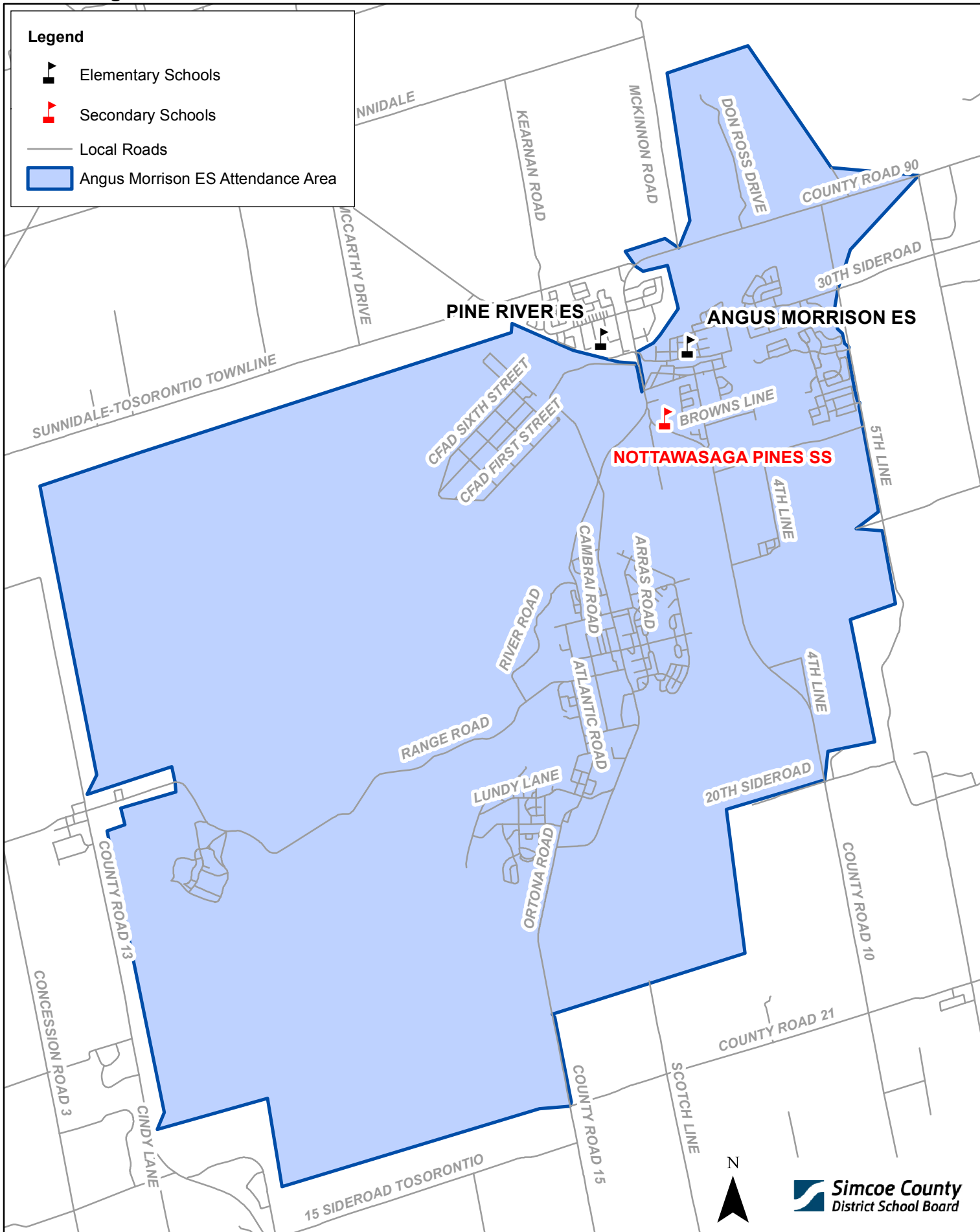
1. That the Business and Facilities Standing Committee recommend that the Board approve the proposed attendance areas, as set out in APPENDIX E of Report No. BF-D-2, Attendance Area Review 2015:01 - Angus Morrison Elementary School and Pine River Elementary School, dated March 2, 2016.
2. That the Business and Facilities Standing Committee recommend that the Board approve the implementation of the attendance areas effective September 2016, as set out in Report No. BF-D-2, Attendance Area Review 2015:01 - Angus Morrison Elementary School and Pine River Elementary School, dated March 2, 2016.

Respectfully submitted by:

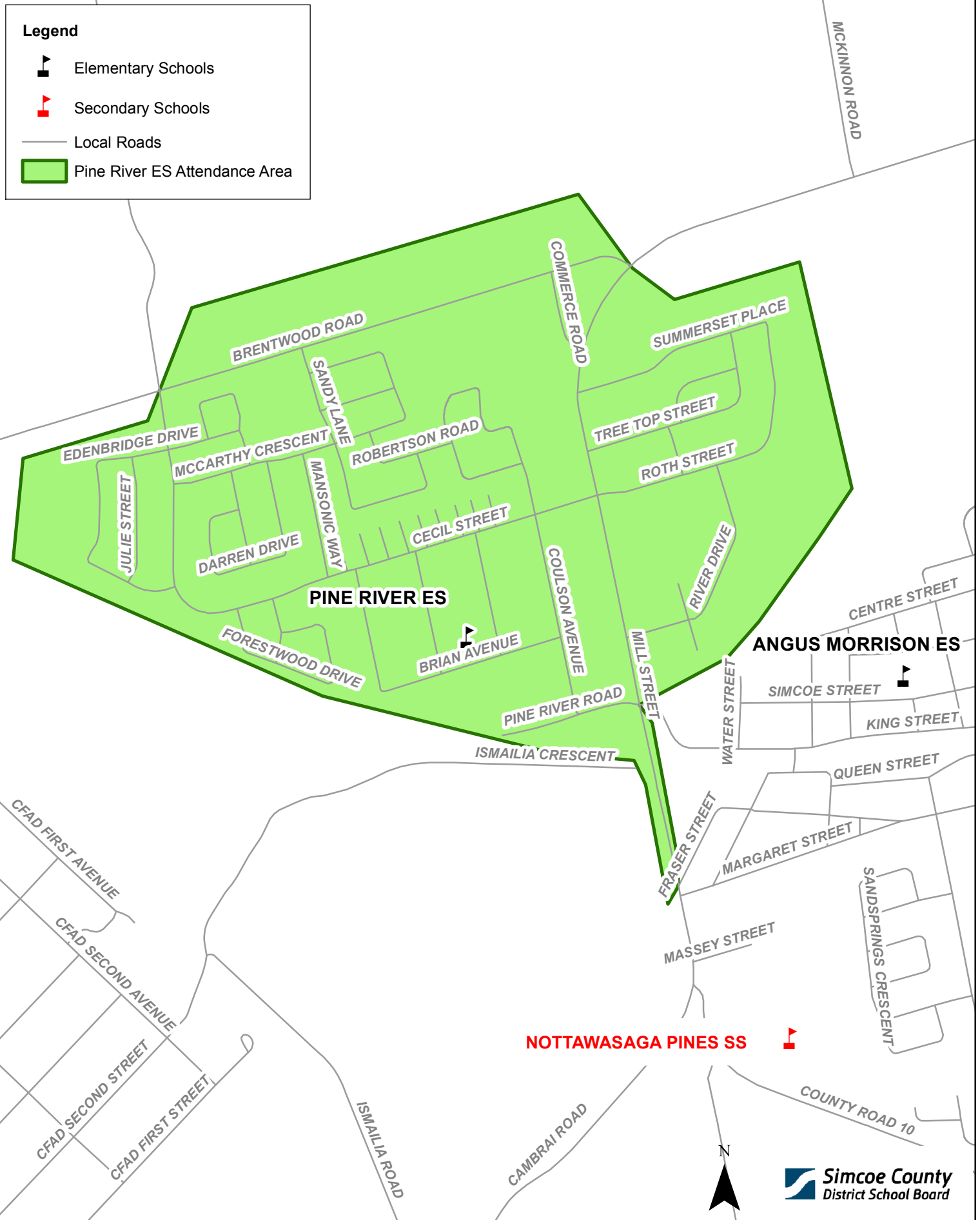
John Dance
Superintendent of Facility Services

March 2, 2016

Current Angus Morrison ES Attendance Area



Current Pine River ES Attendance Area





January 15th, 2016
Amended January 25, 2016

Attendance Area Review – Pine River ES and Angus Morrison ES

Questions & Answers

When will the boundary change occur?

If approved, the changes will be in effect for September 2016.

My child is going into grade 8 in 2016, do they have to go to Pine River ES?

No. If the new boundary is approved, board practice is to permit all grade 8's to decide if they want to transfer to the new school or remain at their current school. Grade 8's wishing to stay at their current school will continue to have busing if eligible for transportation.

If my grade 8 child chooses to remain at Angus Morrison ES, can their siblings also stay?

No. If the new boundary is approved, all other grades are required to attend Pine River ES.

Is the French Immersion Program or the Extended French Program affected by this boundary change?

No, there are no changes to these programs. Busing to Ferndale Woods ES for French Immersion, Ardagh Bluffs PS for Extended French programming will continue.

My child has special needs, how will they be accommodated at Pine River ES?

The board's Special Education team, including the current school's staff, will be involved in the transition planning in order to ensure that there is a seamless and supportive transition.

Is there Before-and-After-School Care at Pine River ES?

*Yes, a before-and-after-school care program is offered by the YMCA of Simcoe Muskoka. **For more information about the B&A program please call (705) 735-9169.***

What type of transition plan will be put into place?

Once the Board of Trustees approves the attendance boundaries, your school principals will work on events and activities to ensure students from each of the schools meet and are prepared for the boundary change.

When will the new boundaries be decided?

Once input is received, a report will go to the Board of Trustees to approve the new boundaries. This report will be presented to the board in March.

Will Angus Morrison ES and Pine River ES be closed to students from out of area?

Yes, the schools will be closed to out of area requests for the 2016/17 school year.

What are the differences in bell times?

Angus Morrison ES: 9:00am and 3:20pm.

Pine River ES: 8:50am and 3:10pm.

Once the boundaries have been approved, the Simcoe County Student Transportation Consortium will review the new boundaries and determine busing pick up and drop off times and identify if changes to bell times are necessary.

Will there be an opportunity to provide feedback to the board?

Yes, you can fill out the comment form at your school, attend the February 4th meeting at PRES at 7:00 pm, or you can email: angusboundarychange@scdsb.on.ca.

Attendance Area Review – Pine River ES and Angus Morrison ES

More Questions & Answers

Why isn't a new school being built in the new subdivisions in Angus?

While there are a lot of new houses being constructed west of the 5th line in Angus, at this point there are not enough children projected to live in the community to build a third public elementary school. The projected public elementary student enrolment in Angus in 4 years is about 900 students, to build a 3rd school we would expect to have about 1500 students.

The school board is proposing to move some students who live in the new development area who are bussed to Angus Morrison ES to Pine River ES to more comfortably accommodate students now and in the future. There are currently no portable classrooms at Pine River ES, this boundary change will add 3-4 portables to this school and reduce the number of portables at Angus Morrison ES.

My child will be moved to Pine River ES but she attends a daycare that is within walking distance to Angus Morrison ES, can she continue to attend Angus Morrison ES?

No. The attendance boundary and busing eligibility is based upon the student's home address not that of the childcare provider.

Why doesn't the board invest any money in Angus now that it is growing?

The school board has made recent investments in Angus. In 2011, the board completed \$3,742,623 in additions and renovations to Angus Morrison ES. This included four full day kindergarten classrooms, a learning centre, library, staff room, and gym; space was also reconfigured to provide a counselling room to address the unique needs of the students from CFB Borden. In 2015 additional renovations were completed to create two additional kindergarten classrooms and a roof replacement program was implemented. Pine River ES has also benefited from improvements in recent years including a calming room in 2012 and two full day kindergarten classrooms in 2013, extensive renovations and additions were also completed in 2000.

Why not move the students from Base Borden to Pine River ES?

Moving 125 students from the base would require even more portables at Pine River ES and would merely switch the problem from Angus Morrison ES to Pine River ES.

In recent years the amount of family housing at CFB Borden was reduced as it transformed to a training base. This corresponded with the 2010 closure of Frederick Campbell ES on the base and the reconfiguration of elementary attendance area boundaries to accommodate base students at AMES.

Why not move the students from the subdivisions north of Centre Street (Zancor, Lancaster, and San Diego Homes) to Pine River ES? They would have less of a bus ride than the Brownley Meadows kids.

Most of the students residing in the subdivisions north of Centre Street are able to walk to Angus Morrison ES. It is desirable for these students to continue to walk to school. Students in the Brownley Meadows subdivision are not able to walk to school and currently take the bus, these students will continue to be bused to school at the Pine River ES location.



February 4, 2016

Attendance Area Review – Pine River ES and Angus Morrison ES**Questions & Answers from Public Meeting**

Why not move the students from the Base to Pine River ES? Do you even talk to the Base?

Moving 125 students from the base would require even more portables at Pine River ES and would merely switch the problem from Angus Morrison ES to Pine River ES.

Staff are in contact with the housing office at Base Borden and are aware that of the 663 homes on base approximately 300 families transfer in and out of base housing each year. In recent years it has been noted that these families have more children than in the past.

The Brownley Meadows subdivision is the farthest one away from the school, which means kids will be on the bus even longer. Can't a closer subdivision be moved to Pine River ES?

The students being bused from the Brownley Meadows subdivision will be on the bus for longer; however, Pine River ES is only 1.2 kilometres away from Angus Morrison ES. Bus pick up times and locations may change at the discretion of the transportation consortium. Should the board approve the proposed changes, the SCSTC will determine the bus routes and times.

It sounds like this decision already been made.

The proposed attendance area boundary has not been approved by the board. Comments received will be included in the staff report which will go to the Business and Facilities committee on March 2nd and the board will make a decision on March 23rd. You may contact your trustee to discuss your concerns, comment forms and a dedicated email address are also available to share your thoughts with the board.

How many Angus Morrison ES students are affected by this proposal?

Approximately 79 students are affected. The breakdown by grade will be determined following the board decision. The number of grade 8 students wishing to stay at Angus Morrison will also affect the number of students moving to Pine River ES.

I will need to change my childcare arrangements to fit the different bus schedule.

Following board approval, the transportation consortium will determine the bus routes, pick up points and schedule. Before and After childcare is also offered at Pine River ES.

I can't pick my children up until after 6:00 p.m., the B&A program doesn't run that long, can those hours be extended?

If there is enough demand for extended hours it may be possible for the childcare operator to do so. Parents interested in this should fill out a comment sheet to this effect.

It doesn't seem like enough students are being moved to Pine River from Angus Morrison.

Approximately 79 students are being moved to Pine River. This alleviate the pressure at Angus Morrison in September and the continued growth in the area will help keep the enrolment at Pine River stable. Having a lot of growth in the community is a good thing for the local schools. If there is enough growth, we may be able to make a business case for additional pupil places in Angus.

Does that mean that in three years' time kids will need to be moved again to a new school? If we're projected to need a new school why not build it now?

It is unlikely that the board would be in a position to construct a new school in the short term. We would need to see a large increase in enrolment to make a business case for a

third school in Angus, and then it would take approximately 2 years for that school to be approved and constructed.

How many portables are there at Pine River and how many more will be added?

There are currently 2 portables at Pine River ES. Approximately 3 portables will be added; however, the need for portables will depend on how many students in each grade are being transferred and how the classes can accommodate additional students.

If the proposal is approved, where do I register my child for kindergarten?

You should enroll your child according to the existing attendance area. If the proposed change to the attendance area is approved, the school will transfer the enrolment information.

Will staff move with the kids?

The staffing changes must be completed in accordance with the collective agreement. Decisions on staffing changes change have not been made.

What is the transition like? My kids have friends that live in the other subdivision that is not moving to Pine River ES.

The principals and parent councils will work closely together to develop events and activities to ease the transition for students moving to Pine River ES.

I am concerned about the safety of kindergarten students who are not familiar with buses at Pine River ES.

The bus loading and parking area will be supervised during bell times, walking students will be directed to other areas during this time. The SCSTC also offers a school bus safety program each summer for first time bus riders.

Is it possible to change the bell times?

Following board approval of the attendance area change, the SCSTC will review the bus routing and may require modifications to the bell times. The bell time is ten minutes earlier at Pine River ES.

If I have a grade 8 who stays at Angus Morrison and a grade 6 who goes to Pine River, will they take the same bus?

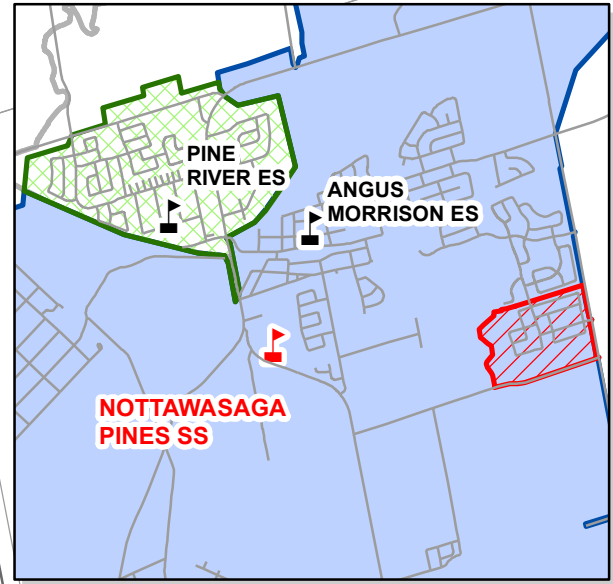
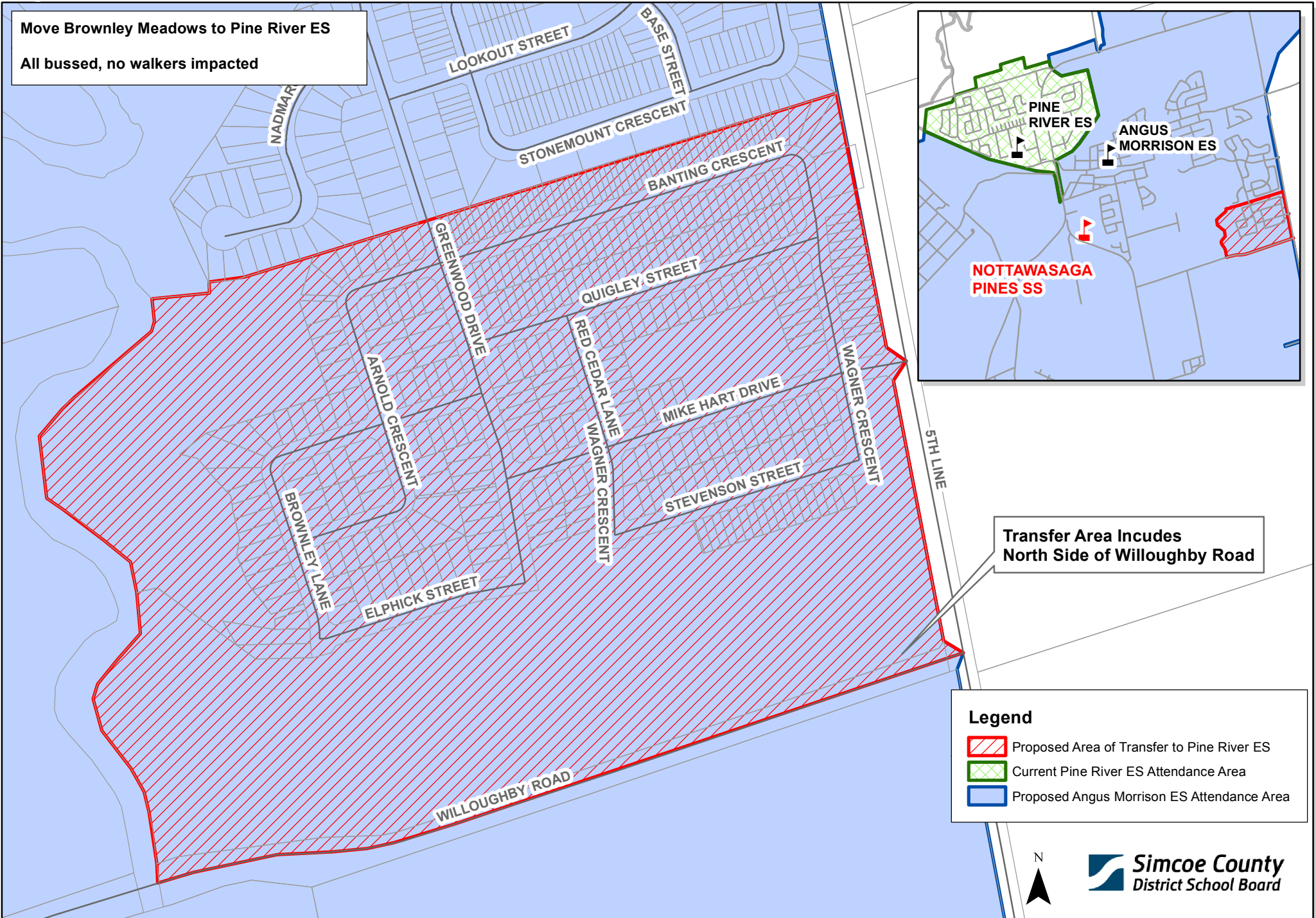
The transportation consortium will determine the bus stops and bus routes, which may entail separate trips for each school.

The Fraser Institute report ranks Pine River lower than Angus Morrison so I'm reluctant to have my child change schools.

The Fraser Institute ranks schools according to EQAO scores only. While these scores are important for educators, they do not accurately reflect the full experience at a school. Parents are invited to speak with the principal at Pine River ES and to tour the school to learn more about the learning environment.




Proposed Area of Transfer

Move Brownley Meadows to Pine River ES
All bussed, no walkers impacted



Transfer Area Includes
North Side of Willoughby Road

Legend

-  Proposed Area of Transfer to Pine River ES
-  Current Pine River ES Attendance Area
-  Proposed Angus Morrison ES Attendance Area



TO: The Chairperson and Members of the
Business and Facilities Standing Committee

FROM: Superintendent of Facility Services

SUBJECT: **ATTENDANCE AREA CHANGE – BAXTER CENTRAL PUBLIC
SCHOOL/PORTAGE VIEW PUBLIC SCHOOL**

1. **Background**

Board Policy No. 2317 – School Attendance Areas, enables the Superintendent of Facility Services the ability to make minor changes to an attendance area at the request of a family. Such a change must be agreed to by all families with students who live near the location and who could potentially be affected by the change. The Superintendent of Facility Services shall inform the Board of the change in attendance areas.

A family currently attending Baxter Central Public School on an out-of area basis has requested a boundary change. The homeschool for the family is Portage View Public School. The attendance area change would result in the area located on the 25th Sideroad of Essa, between County Road 27 and 10th Line, as well as 11th Line north of 25th Sideroad, being transferred from Portage View Public School to Baxter Central Public School (APPENDIX A).

2. **Current Status**

Upon receiving the family's request, the following matters have been reviewed:

Transportation: The Simcoe County Student Transportation Consortium (SCSTC) was contacted to determine if there were any transportation concerns with the request. The SCSTC indicated that the request could be accommodated with negligible long-term costs.

Other families possibly affected: Currently one family with a student living within the proposed area to be amended has the potential to be affected. The student in this instance attends another Simcoe County District School Board school for program purposes (French Immersion). The parent/guardian was contacted and had no objection to the proposed change.

Student enrolment and school utilization: Student enrolment and utilization at the two schools involved will not be materially impacted as a result of this attendance area change.

3. **Conclusion**

Staff recommends that the 25th Sideroad of Essa, between County Road 27 and 10th Line, as well as the 11th Line north of 25th Sideroad Line, currently within the attendance area of Portage View Public School, be transferred to Baxter Central Public School, as depicted in APPENDIX A. This change will take effect September 2016.

4. **Report Status**

This report is provided for information.

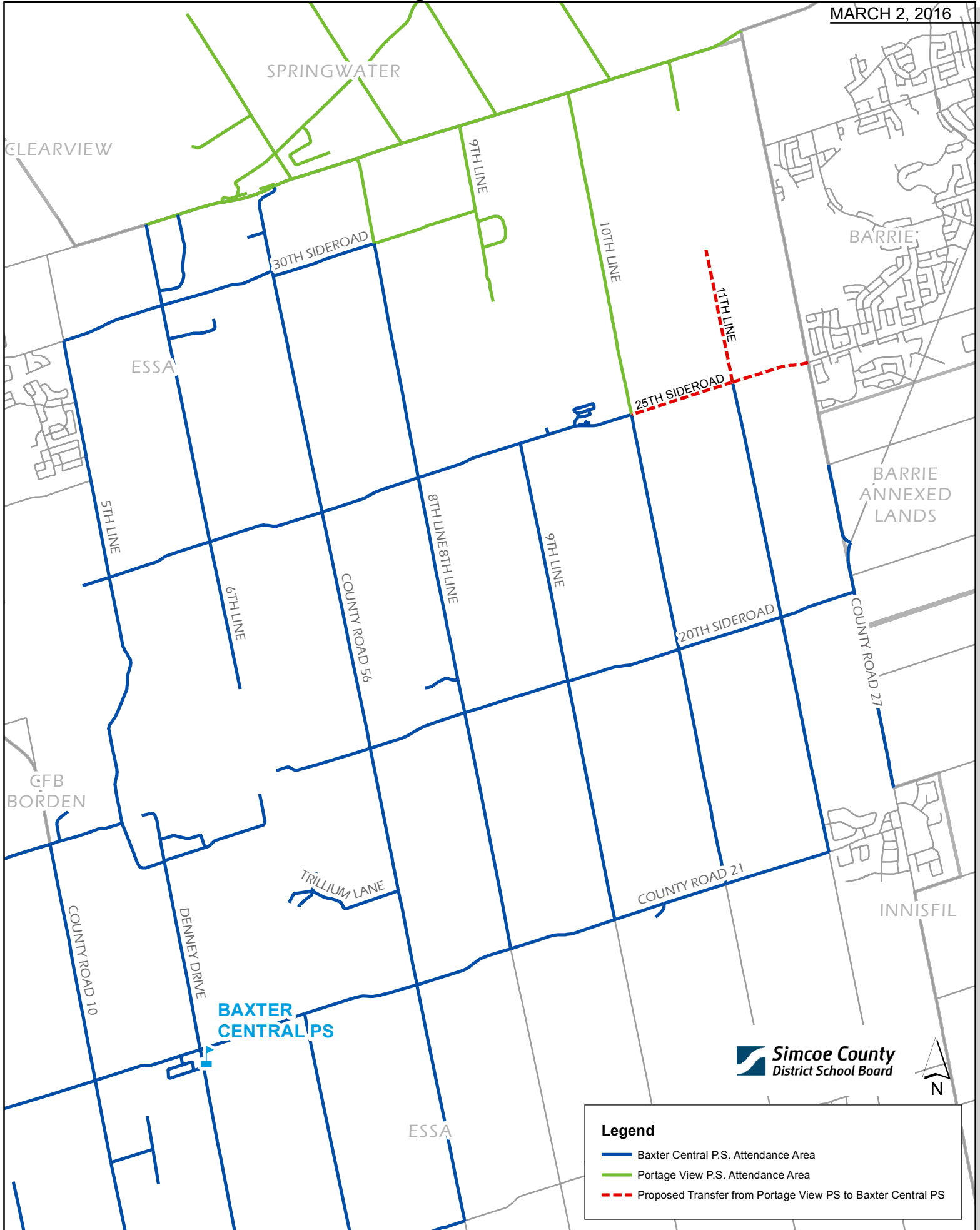
Respectfully submitted by:

John Dance, Superintendent of Facility Services

March 2, 2016

Proposed Attendance Area Change Baxter Central Public School & Portage View Public School

REPORT NO. BF-I-1
APPENDIX A
MARCH 2, 2016



Legend

- Baxter Central P.S. Attendance Area
- Portage View P.S. Attendance Area
- - - Proposed Transfer from Portage View PS to Baxter Central PS

TO: The Chairperson and Members of the
Business and Facilities Standing Committee

FROM: Superintendent of Business Services

SUBJECT: **BUDGET UPDATE**

1. Background

On an annual basis the board's operating budget is prepared between the months of January and May with ultimate approval and final budget submission to the Ministry by the end of June. Over the past four years, the budget process has been completed by the end of May, at the latest. In order to complete the process in a timely manner, in the past reports have been presented to the Board of Trustees in advance of the final budget document being approved. This is done to help expedite conversations during the larger budget deliberations.

2. Current Status

At the present time, we have two schedules to be included as part of the 2016-2017 Operating Budget, for discussion. Trustee Expenditures (APPENDIX A) and School Basic Budget (APPENDIX B) are attached. Although these schedules may receive some adjustment, as a result of the release of the 2016-2017 Technical Paper, we are not anticipating major changes to the schedules attached.

3. Report Status

This report is provided for information.

Respectfully submitted by:

Brian Jeffs
Superintendent of Business Services

March 2, 2016

**Simcoe County District School Board
2016-2017 Proposed Operating Budget**

March 2, 2016

System Services - Trustee Expenses

	2015-2016 Revised Budget \$000's	2016-2017 Proposed Budget \$000's
Common Trustee Expenses - Board Business		
Honoraria (including CPP and EHT)	189	189
Travel & Kilometrage Claims	21	17
Communication	15	11
	<u>225</u>	<u>217</u>
Individual Trustee Expenses		
Trustee Discretionary ¹	3	3
Trustee Professional Development ²	44	44
	<u>47</u>	<u>47</u>
Total Expenses	272	264

Notes:

1. The discretionary budget provides for consumable materials required to perform Trustee duties and non-PD related meals. Each Trustee has been allocated \$200.

2. Each Trustee has a maximum allocation of \$2,800 for professional development. An additional amount of \$1,000 has been provided for each of the Chair and OPSBA representative, or their designates.

**Simcoe County District School Board
2016-2017 Proposed Operating Budget**

March 2, 2016

School Basic Budget - Elementary

School Name	Total 2015-16		Total 2016-17	
	School Administered Basic Budget		School Administered Basic Budget	
	ADE	\$	ADE	\$
Adjala Central	240.0	26,844	217.0	25,285
Admiral Collingwood	562.0	61,127	600.0	64,788
Alcona Glen	901.0	81,398	648.0	61,287
Algonquin Ridge	519.0	51,346	582.0	56,134
Allandale Heights	314.0	32,923	336.0	34,930
Alliston Union	758.0	73,543	814.0	78,305
Andrew Hunter	396.0	40,128	383.0	39,396
Angus Morrison	619.0	57,495	529.0	50,143
Ardagh Bluffs	565.0	58,301	612.0	64,202
Assikinack	322.0	33,969	302.0	32,521
Baxter	323.0	34,775	305.0	33,282
Bayview	363.0	37,771	317.0	34,186
Birchview Dunes	638.0	61,766	676.0	64,531
Brechin	188.0	23,395	179.0	22,577
Byng	246.0	28,015	280.0	30,664
Cameron Street	456.0	43,512	534.0	48,755
Chris Hadfield	589.0	55,878	598.0	55,627
Clearview Meadows	276.0	30,332	274.0	30,356
Codrington	296.0	36,619	302.0	36,390
Coldwater	289.0	32,581	323.0	35,985
Connaught	275.0	30,445	231.0	27,273
Cookstown	613.0	61,504	679.0	66,510
Couchiching Heights	323.0	34,345	312.0	33,783
Cundles Heights	342.0	36,366	316.0	33,401
East Oro	236.0	27,156	207.0	24,761
Emma King	370.0	38,329	349.0	35,751
Ernest Cumberland	650.0	60,889	666.0	62,596
Ferndale Woods	624.0	58,079	628.0	57,245
Fieldcrest	666.0	61,429	708.0	64,857
Forest Hill	615.0	62,670	621.0	62,540
Fred C. Cook	423.0	42,654	433.0	43,104
Goodfellow	670.0	64,671	568.0	56,439
Guthrie	455.0	45,505	461.0	45,689
Harriett Todd	476.0	46,610	452.0	44,948
Hewitt's Creek	681.0	63,372	666.0	62,274
Hillcrest - Barrie	588.0	58,391	674.0	65,147
Hillsdale	206.0	24,589	208.0	24,950
Holly Meadows	664.0	63,445	633.0	60,479
Hon. Earl Rowe	169.0	21,294	165.0	20,876
Huron Park	350.0	37,372	334.0	36,331
Huron Centennial	515.0	50,268	525.0	51,148
Hyde Park	511.0	49,271	563.0	53,431
Innisfil Central	173.0	22,322	167.0	21,404
James Keating	267.0	29,600	277.0	30,573
Johnson Street	251.0	27,939	239.0	27,172
Killarney Beach	275.0	30,445	297.0	32,632

**Simcoe County District School Board
2016-2017 Proposed Operating Budget**

March 2, 2016

School Basic Budget - Elementary

School Name	Total 2015-16		Total 2016-17	
	School Administered Basic Budget		School Administered Basic Budget	
	ADE	\$	ADE	\$
Lake Simcoe			400.0	39,259
Lions Oval	466.0	45,641	464.0	46,694
Maple Grove	462.0	45,263	455.0	44,373
Mapleview Heights	613.0	58,674	597.0	57,922
Marchmont	337.0	35,922	348.0	36,718
Minesing	491.0	48,623	486.0	48,380
Moonstone	139.0	18,348	76.0	12,476
Mountain View	429.0	44,936	403.0	42,800
Mundy's Bay	543.0	55,812	552.0	56,069
New Lowell	252.0	28,496	249.0	28,201
Nottawa	287.0	31,697	294.0	32,312
Nottawasaga/Creemore	198.0	23,624	201.0	24,092
Oakley Park	291.0	30,685	296.0	30,587
Orchard Park	438.0	46,058	437.0	46,060
Pine River	254.0	28,800	319.0	33,638
Portage View	453.0	45,361	427.0	43,563
Rama	212.0	25,381	228.0	26,723
Regent Park	594.0	61,316	659.0	66,401
Severn Shores	330.0	38,264	333.0	34,548
Shanty Bay	162.0	20,946	139.0	19,063
Sir William Osler	169.0	21,154	162.0	21,112
Steele Street	354.0	36,749	351.0	37,415
Sunnybrae	409.0	41,538	415.0	42,707
Tay Shores	544.0	53,408	478.0	48,532
Tec. Beeton	392.0	40,631	349.0	36,915
Tec. South	178.0	22,526	168.0	21,629
Terry Fox	531.0	52,009	529.0	51,677
Tosorontio	356.0	37,393	340.0	36,406
Tottenham	291.0	31,135	304.0	31,889
Trillium Woods	493.0	48,147	490.0	47,981
Uptergrove	294.0	31,786	281.0	30,922
W.C. Little	645.0	62,194	599.0	58,424
W.H. Day	585.0	58,367	631.0	61,945
W.R. Best Memorial	349.0	36,015	344.0	35,919
Warminster	213.0	24,608	220.0	25,376
Warnica	558.0	59,602	394.0	44,556
West Bayfield	528.0	52,038	557.0	54,290
Willow Landing	569.0	53,400	592.0	55,722
Worsley	448.0	43,807	480.0	46,661
Wyevale	216.0	25,338	231.0	26,547
Start-up FSL unassigned	-	5,000	-	-
	35,321.0	3,621,370	35,468.0	3,631,162

**Simcoe County District School Board
2016-2017 Proposed Operating Budget**

March 2, 2016

School Basic Budget - Secondary

School Name	Total 2015-16		Total 2016-17	
	School Administered Basic Budget		School Administered Basic Budget	
	¹ ADE	\$	¹ ADE	\$
Banting Memorial	1,495.67	250,825	1,363.37	231,163
Barrie Central	656.71	124,028	-	-
Barrie North	959.98	165,766	1,195.76	202,122
Bear Creek	1,471.27	244,899	1,468.01	243,907
Bradford	1,095.50	188,213	1,065.51	183,370
Collingwood Collegiate	1,279.27	216,073	1,276.91	214,920
Eastview	1,372.63	232,153	1,402.52	239,141
Elmvale District	414.71	81,982	393.06	78,606
Innisdale	1,605.12	265,396	1,761.19	289,170
Midland	613.44	113,417	-	-
Nantyr Shores	1,124.28	191,081	1,161.78	196,777
North Simcoe			835.52	148,387
Nottawasaga Pines	717.68	128,624	676.57	122,502
Orillia Secondary	1,064.70	182,946	1,020.07	174,991
Penetanguishene	356.97	73,809	-	-
Stayner Collegiate	382.61	78,014	316.52	67,307
Twin Lakes	880.67	156,053	880.98	155,916
Alt Education School	282.80	61,179	297.29	63,393
	15,774.02	2,754,458	15,115.06	2,611,672

¹Excludes Continuing Education Average Daily Enrolment for grades 9 to 12 (under 21 years)

TO: The Chairperson and Members of the
Business and Facilities Standing Committee

FROM: Superintendent of Education

SUBJECT: **TRANSITION PLAN FOR ORILLIA SECONDARY SCHOOL (OSS)**

1. Background

The construction of Orillia Secondary School began in August 2014 and is now expected to open for students on March 21, 2016. The school mascot is a NightHawk and the school colours are black, silver and burnt orange. The moniker and colours were decided by a committee made up of students and staff after several student voice opportunities. An Open House was held on Saturday February 20, 2016 featuring tours for staff along with the local media; this was very well received. The level of curiosity, excitement and anticipation continues to grow both within the school and the local community as opening day approaches. Numerous pictures and social media posts relating to the February 20 event have also garnered a great deal of positive feedback for this spectacular building. The abundance of natural light, open spaces and the natural affinity of the indoor and outdoor spaces continues to impress. Spring and fall outdoor sporting activities will take place at 2 Borland Street as the playing field at the new site will not be ready for student use until September 2017.

2. Current Status

The deliveries of new furniture and equipment will begin the week of February 22 and continue until the March 18. Staff are working diligently to prepare for the move by packing classroom and learning materials not currently in use. The moving of existing equipment, learning material and resources will commence the week of February 29 with the movement of large items such as technology equipment (tech shops) and the fitness room equipment. Some classroom materials will be moved during the week of March 4 with the bulk of the learning materials and resources being moved over the March Break (March 14-18). It is our hope that we will be able to gain access for staff to start unpacking and organizing some of the materials in the evening during the week of March 7-11.

Special arrangements have been made to have students delivered to the 2 Borland St E. site to begin the day on March 21. Following opening exercises, students will receive their new timetables and locker assignments before heading down to the gymnasium for a motivational media presentation entitled, "All For One". Following the presentation the entire school community will walk together down North Street to the new building at 250 Collegiate Drive. Logistics of the march are currently being worked out with the assistance of the school's Community Liaison Officer.

During the afternoon, students will attend four shortened classes and become acclimatized to their new school. Plans are also in the works to provide transition visits for the students in our Life Skills and Learning Centre programs during the week March 7-11. Many of our Life Skills students have been monitoring the building progress through regular "walk-bys" and have seen a "go-pro" video created to help ease their transition.

3. Report Status

This report is provided for information.

Respectfully submitted by:

Paul Sloan
Superintendent of Education

March 2, 2016